



Musicpad

Version 1.5

© Copyright Ocean-Point Software 2010
www.ocean-point.co.uk

Introduction

MusicPad is an application designed to manage lyrics, guitar chords and sheet music and provide a comprehensive database of music for bands, musicians, etc. MusicPad aims to remove the need for paper copies of music and provide an easy and comprehensive application to manage you music in various settings.

Installing

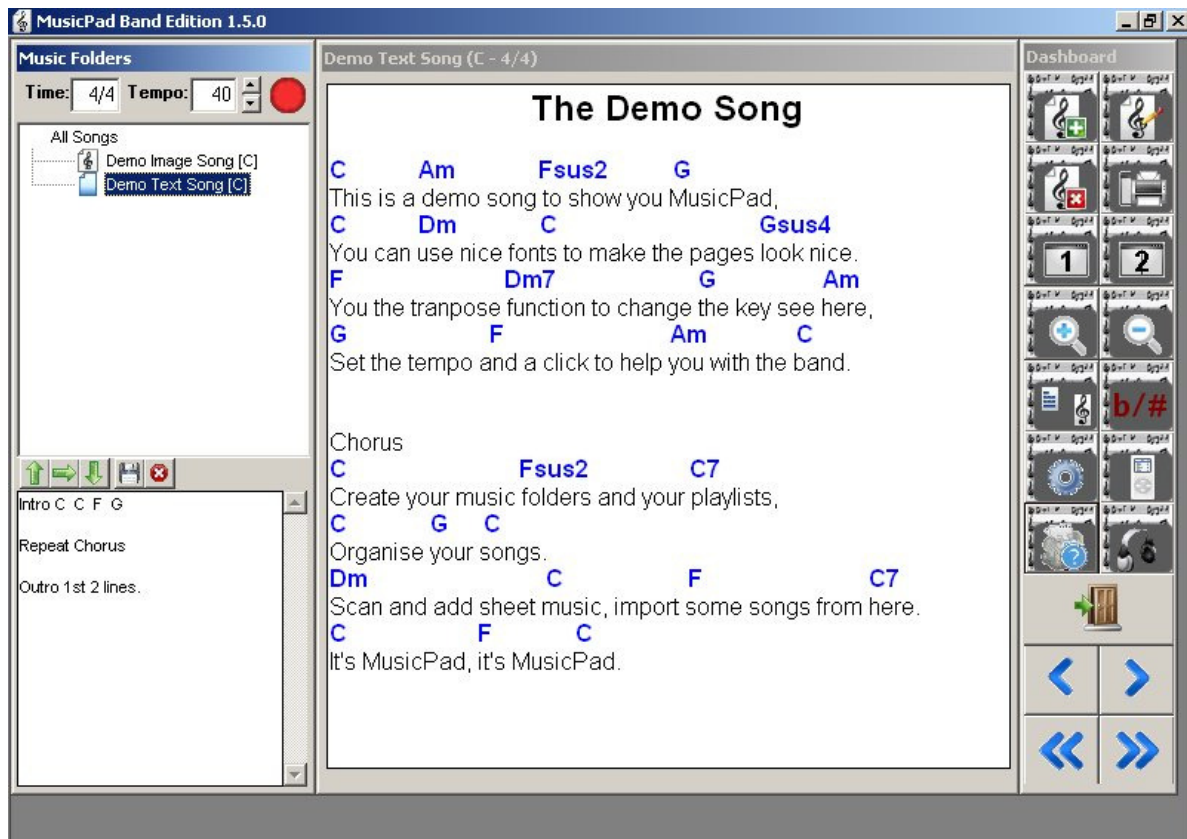
MusicPad is designed to work on Microsoft Windows operating systems and as such has been tested with Windows 2000, Windows XP & Windows Vista.

Install MusicPad by running the MusicPad.msi from the installation kit provided. This will install the application to your computer.

Running

Once you have installed MusicPad you will find a shortcut to the application in your start menu. Run the application by clicking on the MusicPad icon.

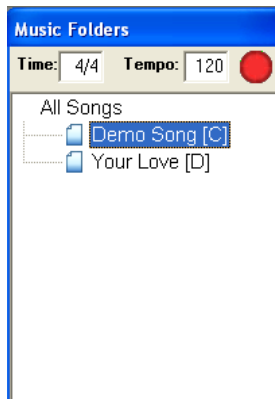
If the application has installed correctly you should be presented with the main MusicPad screen as show below:



The main MusicPad screen is divided in three distinct sections. On the left hand side of the screen is the Music Folder list.

Music Folder

This contains a list of all the songs that you have added to the MusicPad application. At the top of the Music Folder window is a drop down menu, entitled "Play Lists". This contains all the play lists that you have created within the application.



Tempo - When you add a song into MusicPad you can specify the tempo. When the song is selected from the Music Folder the metronome will be set to this tempo and a BPM indicator will be shown to the right of this box. You can also specify the tempo by typing this into the tempo text field and pressing the Enter key.

Song Pages

The centre part of the screen displays either the text/chords of the song or the sheet music. This is dependant on how the song was originally added into MusicPad. Either 1 or 2 pages are displayed depending on how you have configured the settings under "Options".

Dashboard

The last section of the screen is the "Dashboard". This is the window which contains all the function buttons to allow you to control the application.



Add & Edit Song - These functions allow you to add or edit a song. This is discussed in more detail further on in this document.

Delete Song - This function allows you to delete the song currently highlighted in the Music Folder list.

Print Song - Allows you to send the currently displayed song to the printer.

Page View - Selecting the [1] button will display a single page of the song at a time. By selecting the [2] button will display two pages of the song at a time.

Zoom - These function buttons allow you to increase or decrease the zoom factor of a page. This has the result of increasing or decreasing the font size.

Text/Image - This function allows you to toggle between a text/chord page or a scanned page (Eg Sheet Music).

Transpose - After pressing the key change button a list of keys will be displayed. Click on the key you wish to transpose the music to the specified key.

Play Lists - This function allows you to create/edit play lists of songs in MusicPad.

Options - Selecting this button will display the options dialog box which allows you to customise aspects of MusicPad.

Quick List - This allows you to quickly view, search and select a song instead of using the music folder list on the main screen.

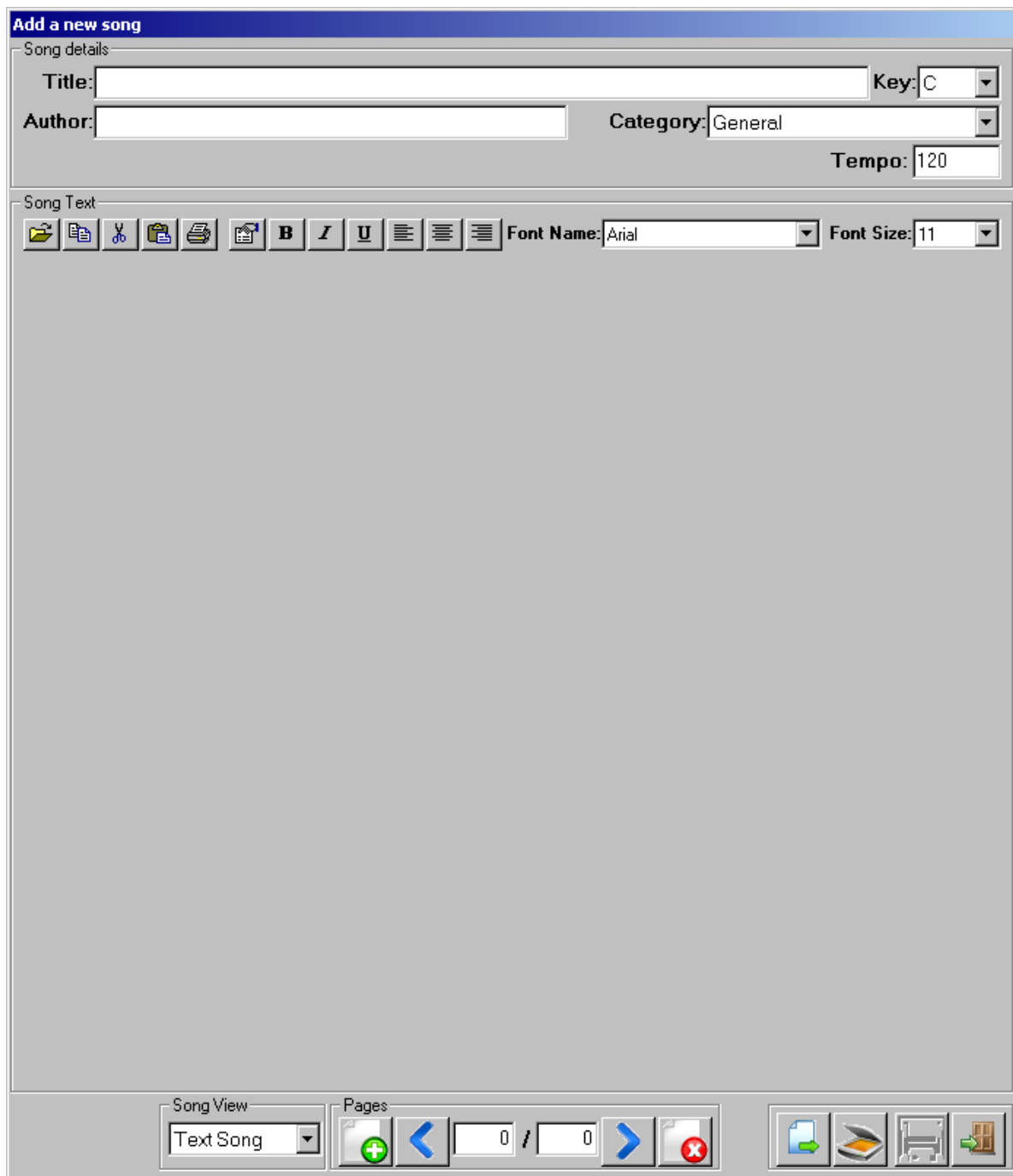
Chord Charts- This will display a popup box of chord charts. Sometimes you forget how to play a chord and this will show you a number of chord charts to help.

Exit Application - This allows you to exit the application.

Navigation - To allow you to move through the pages of a song the previous and next buttons are provided. By pressing the corresponding button you will move to either the previous page or the next page. Below these buttons are the "Goto First" and "Goto Last" buttons. Selecting these will either move to the first or last page of the song. (You can also use the arrow keys on the keyboard to navigate).

Adding a song

When you click the Add Song button on the dashboard you will be presented with a screen similar to the one shown below:



The screenshot shows a web form titled "Add a new song". The form is divided into two main sections: "Song details" and "Song Text".

Song details:

- Title:** A text input field.
- Author:** A text input field.
- Key:** A dropdown menu currently set to "C".
- Category:** A dropdown menu currently set to "General".
- Tempo:** A text input field with the value "120".

Song Text:

- A toolbar with icons for file operations (upload, copy, paste, delete, print, save) and text formatting (bold, italic, underline, bulleted list, numbered list, indent).
- Font Name:** A dropdown menu currently set to "Arial".
- Font Size:** A dropdown menu currently set to "11".

Bottom Panel:

- Song View:** A dropdown menu currently set to "Text Song".
- Pages:** A navigation area with a green plus icon, left and right arrows, and a page indicator showing "0 / 0".
- Additional Icons:** A set of icons including a document with a green arrow, a scanner, a printer, and a folder with a green arrow.

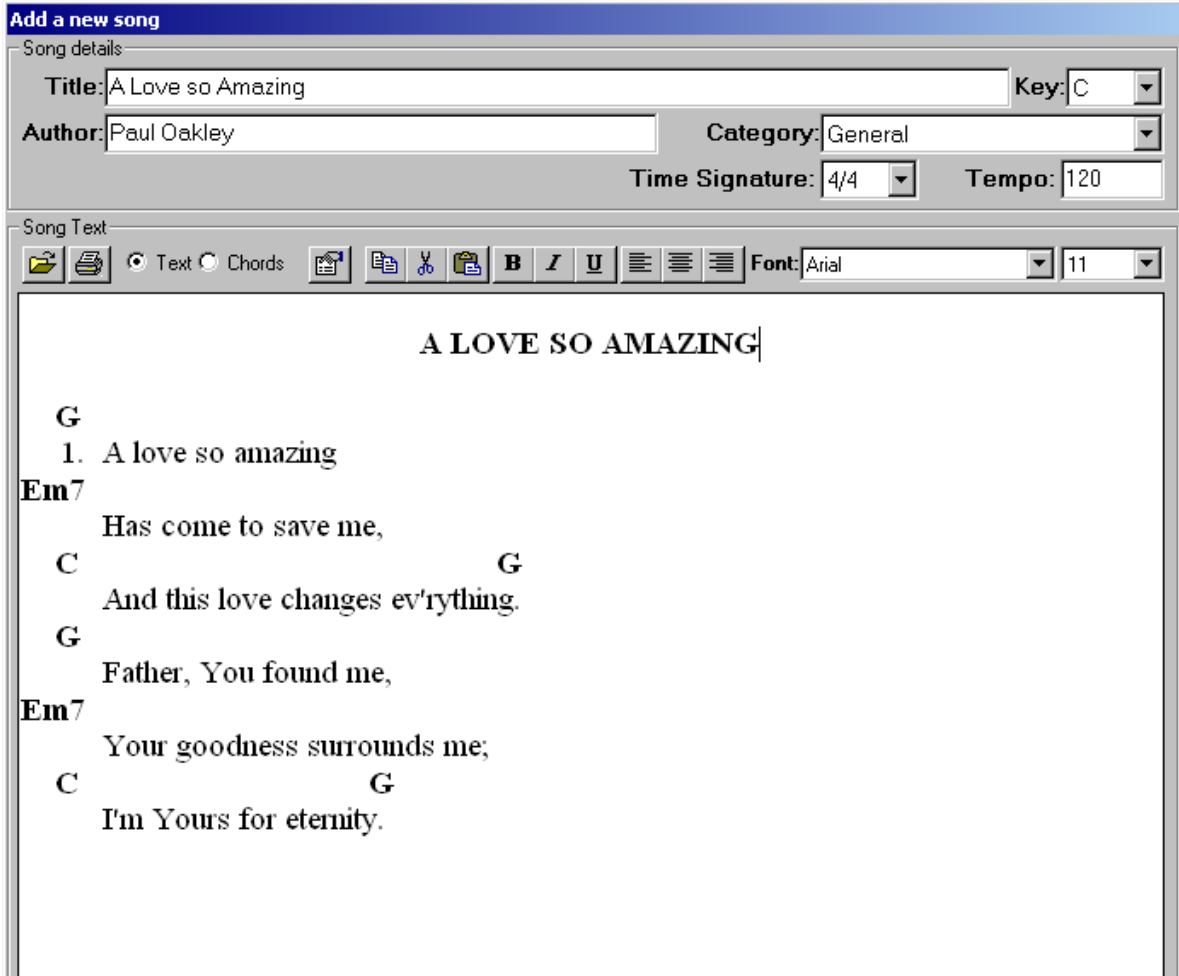
First of all you need to enter information relating to the song. These fields are "Title", "Author", "Key" & "Time Signature" of the song. You can also specify the category you would like the song to appear under and the tempo of the song.

Once you have entered the fields above you need to let MusicPad know what format the song you are entering will be in, either a Text/Chord entry or a scanned Image using an attached scanner. This is specified by selecting either "Text Song" or "Image Song" in the song view drop down list at the bottom of the screen.

Once you have selected the format you can now at the first page. This is done by

clicking on the “Add Page” button .

If you are adding a “Text Song” a white panel will now be displayed in the middle of the screen as show below:



You will also notice that the page counter at the bottom of the page will now show page [1] of [1].

You can now enter the lyrics and/or chords to your song. The entry is very similar to a word processor and you will find formatting buttons at the top of the page, as shown:



[B1] - Import File

This function allows you to import a text or Rich Text File (RTF). Once clicked you will be presented with a file dialog box allowing you to specify the location of the file you wish to import.

[B2] - Print Song

This function will print the current page to the default printer.

[B3] - Chord Marker & Edit Modes

For MusicPad to be able to distinguish between lyrics and chords so you can make use of the transpose feature you need to let MusicPad know which are the chords on the page. This is achieved by clicking on the “Chords” mode button on the menu bar and clicking at the beginning of each line which has chords on it. The chords will change from black to blue indicating these have been identified as chords.

If the entire line is not made up of chords you can highlight the individual chords in “Text” mode and then click the [B3] Chord Marker button. The highlighted text will then turn blue. When you are in “Chords” mode you are unable to change the text until you switch back to “Text” mode.

Once you have entered the page text and/or chords you must click the Save button located at the bottom right of the screen.

If you wish to add another page click the “Add Page” button again. You will notice the navigation page count increase to [2] of [2] and a blank page appear.

[B4] - Copy to Clipboard

This function allows you to copy the selected text to the clipboard for use in another application.

[B5] - Cut to Clipboard

This function allows you to cut the selected text to the clipboard for use in another application.

[B6] - Paste from Clipboard

This function allows you to paste the contents of the clipboard into the current page. This is useful for copying text from one application into MusicPad. You can also right click on the page which will display a pop up clipboard context menu.

Scanning a Page

You can also add pages for a song via scanning the page. This could be a music score or any other sort of document.

To perform this operation select "Image Song" from the song view drop down list.

Now click on the scanner icon button .

You will then be prompted to place the piece of paper in the scanner and then click OK.

The scanner will now scan the piece of paper and then display the Image on the screen. If you are happy with the scanned Image click the Save button to save the song.

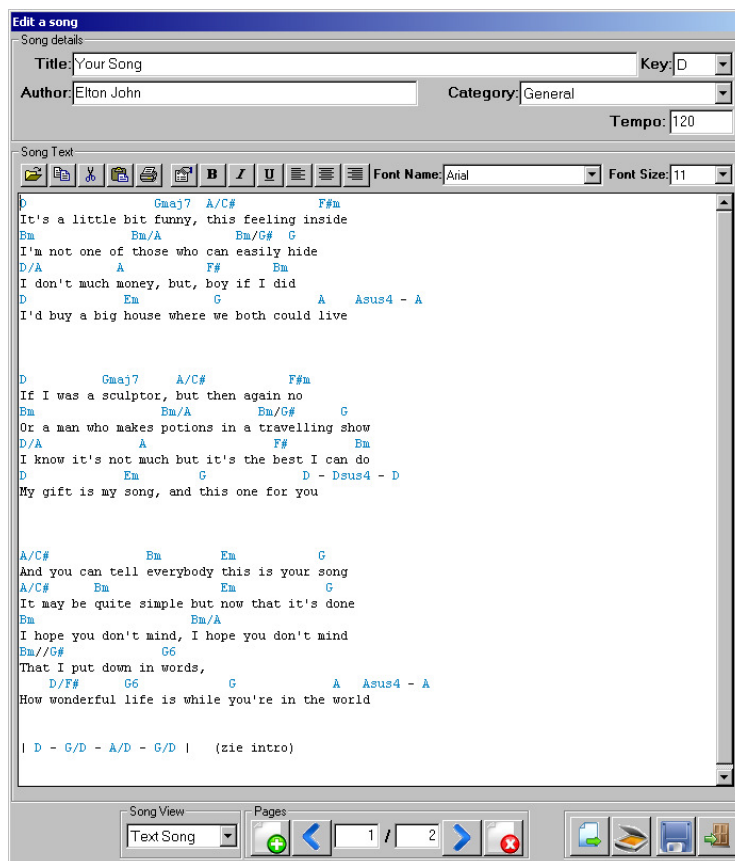
If the scanner does not respond ensure you have the correct scanner selected in the options/configuration screen.

You can also add an image which you have already scanned using another application. This image must be in a TIF file format. Ensure you are in Image mode and then click the Add button. You will now be prompted to specify the Image File you wish to add.

Editing a Song

The edit screen is similar to the Add Song screen detailed above. Firstly select the song you wish to edit from the Music Folder list on the left of the screen. Now click the "Edit Song" button on the dashboard.

You should see a screen similar to the one show below:



You can now edit the song as you would in a normal word processor. You can navigate

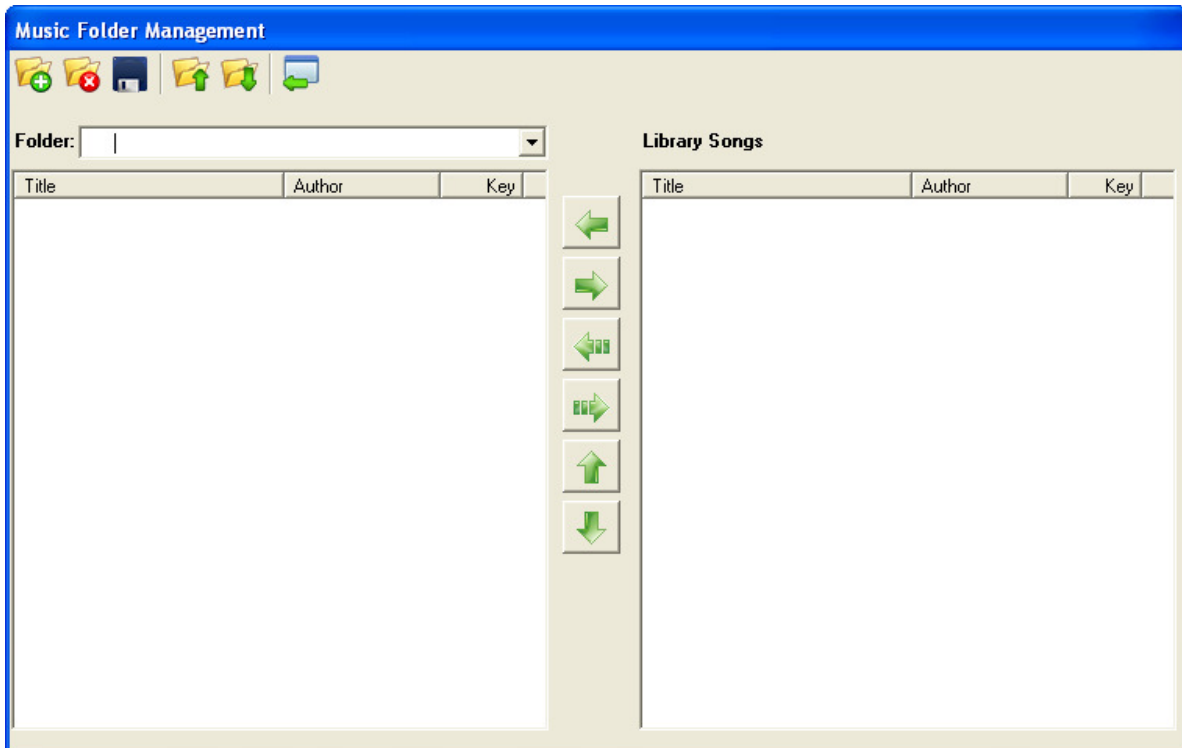


buttons show here to move through pages of the song. You can also use the Add Page and Delete Page buttons to add and delete pages in the song.

Music Folders & Playlists

Once you have added your songs you may only want to see a subset of these songs in your folder list on the main screen. This can be achieved by creating a music folder. This is done by clicking on the Music Folder administration button on the Dashboard.

A screen similar to the one shown below should appear:



To create a new music folder, click the folder with the plus symbol at the top of this screen. You will then be prompted to enter a descriptive name for the folder.

A list of all the songs in MusicPad will be displayed on the right of the screen. Using the arrows located in the centre of the screen you can add and remove songs from the play list. Highlight the song on the right list and then click the right facing arrow. You should now see this song appear in the left list, indicating it has been added to the music folder.

You can also change the order the songs are listed in your music folder by using the up and down arrows in the centre of the screen.

Once you have created your music folder and added the relevant songs, click the save button on the toolbar.

Edit Play List

To edit a play list select the play list from the drop down at the top of the screen. You can now change the name of your play list by over typing in the drop down box and selecting and deselecting songs. Once you are happy with your changes click the Save button to save your changes to the database.

Delete Play List

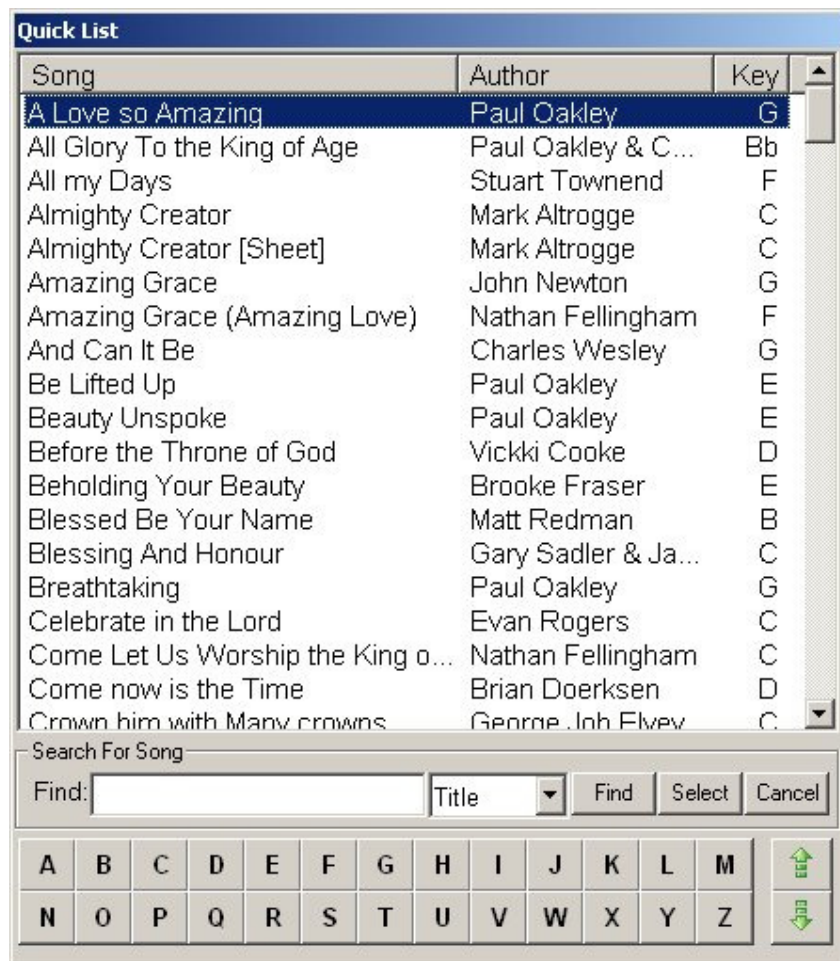
Select your play list from the drop down at the top of the play list screen. Now click the "Delete Play List" button. You will then be prompted to confirm removal of the play list.

Import & Export Songs

There may be times when you need to back up your songs or wish to email a subset of the songs to another user of "MusicPad". This can be achieved by creating a playlist with the songs in which you wish to export and then clicking on the export button on the toolbar. This will create a zip file with the songs in the playlist. A user can then import this list by clicking on the import button and selecting the file.

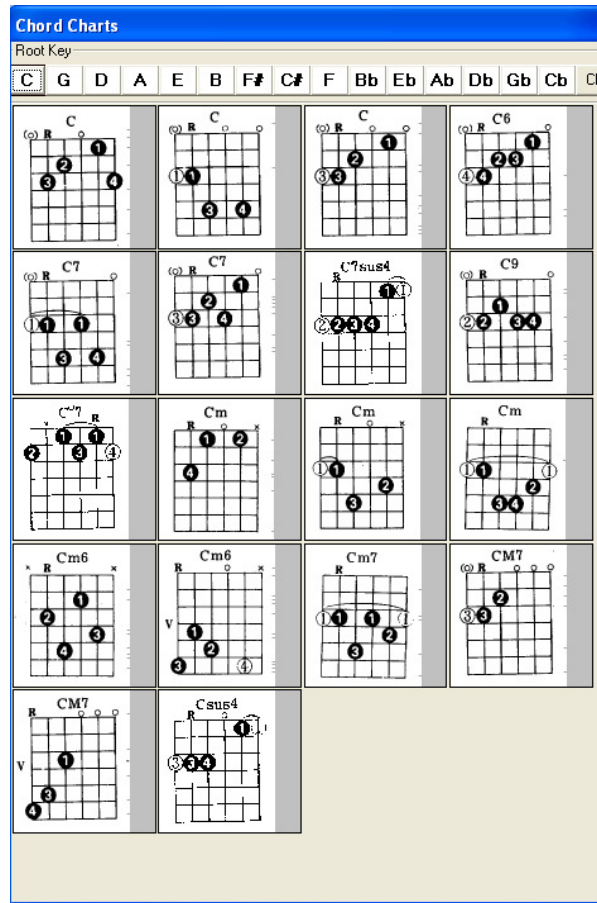
Quick List

Quick list will display a list of all the songs in MusicPad. It allows you to quickly search and display the music instead of selecting it from a playlist.



Chord Charts

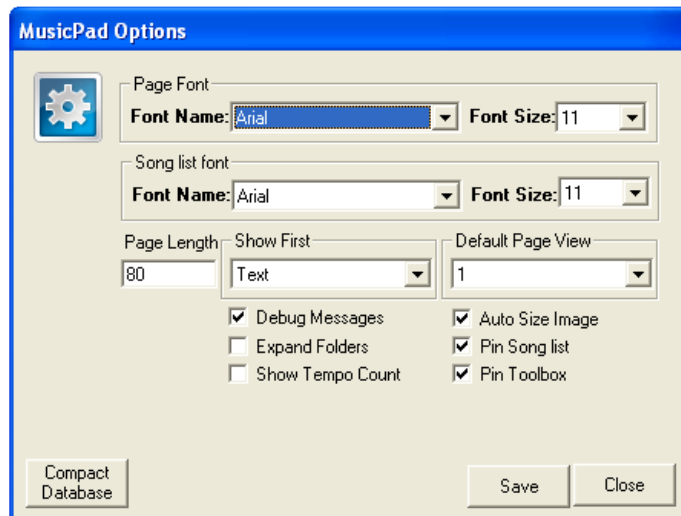
Display a chord chart for the strange chords you sometimes forget.



Application Options

On the dashboard is the configuration/options button, next to the exit application button.

When you press this button you will be presented with a screen similar to the one shown below:



Page Font details the default font that will be used when creating a new song. You can change this using the font options on the edit song page.

Song List font defines the font name and size that will be used when display the Music Folder list on the left of the screen.

Show First - If a song has both a scanned image and a text/chord representation this details which page type to display first when a song is selected.

Default Page View - This sets how many pages to display when a song is selected.

Page Length - Page length defined the number of lines that should be import per page. This is useful when bulk import RTF or text files and you need to set the maximum number of lines you wish per page.

Short Cut Keys

When using MusicPad it may be of help to use shortcut keys instead of the mouse. Below are defined keys that have been mapped to functions in MusicPad:

+	-	Zoom In
-	-	Zoom Out
F1	-	Display Help
F2	-	View 1 Page
F3	-	View 2 Pages
F4	-	Toggle between Image & Text/Chord view
F5	-	Transpose Song
F6	-	Show Quick List
F8	-	Display play list Window
F9	-	Show Chord Charts
F10	-	Exit Application
F12	-	Apply Key Change
Enter	-	Move Page
Right Arrow	-	Move to Next Page
Left Arrow	-	Move to Previous Page
Space	-	Show/Hide Dash Board & Folder List.